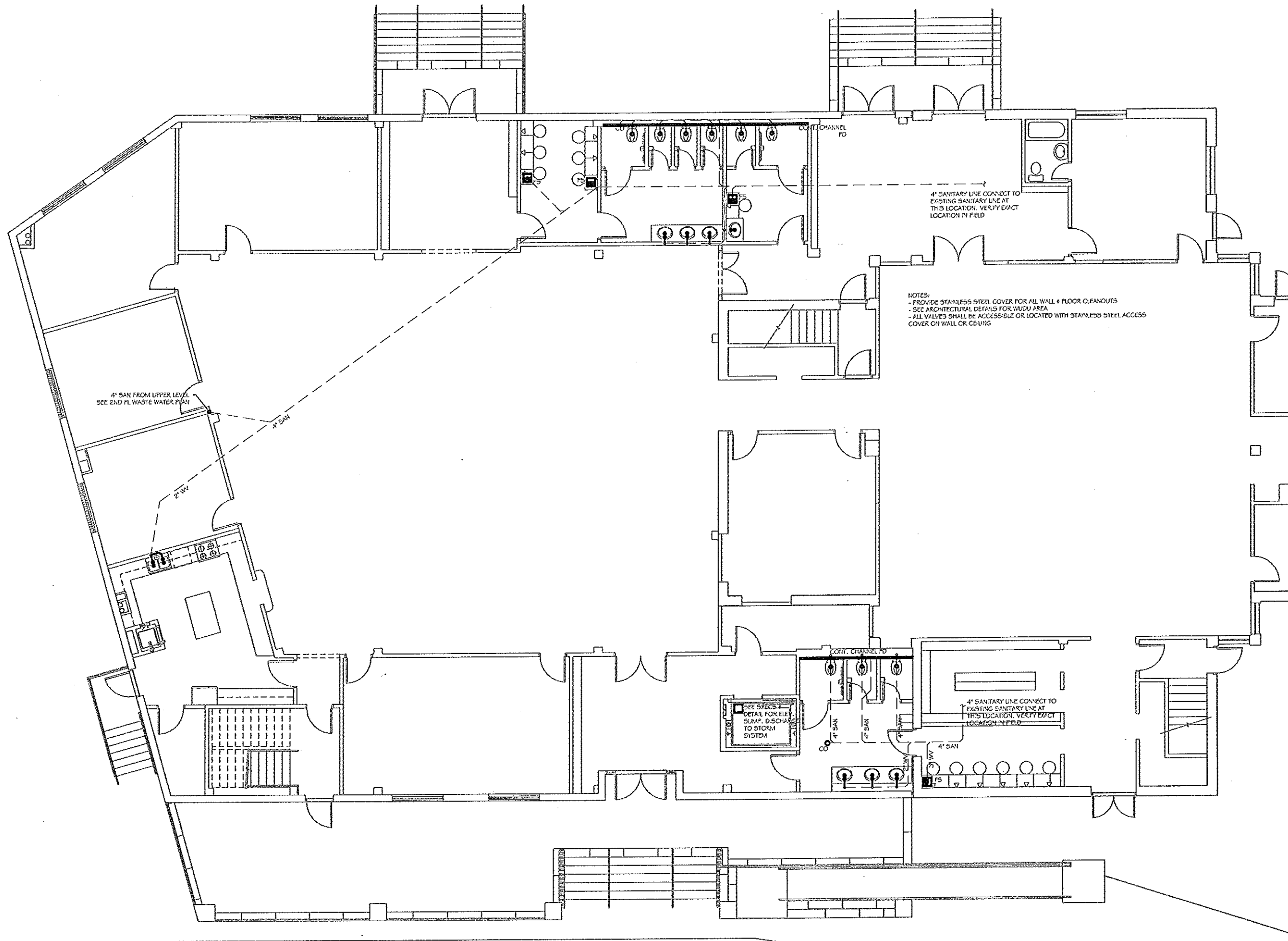


F:\Dwg\0-2009-JOB\0919-Trk-Msq\CD\Sketch\CD-As Built\consultant\MEP\In\111211\TRANSMIT\Z105\12-08-11.dwg, 5/22/2012 9:14:45 AM



SPITZGLASS FORMULA USED FOR GAS PIPE SIZING:  
 $q = 3550 k (h/1.5G)^{1/2} \quad (1)$   
 where  
 $q$  = natural gas flow capacity (cfh)  
 $h$  = pressure drop (in Water Column)  
 $l$  = length of pipe (ft)  
 $k = 1.45(1 + 3.6/d + 0.03 d)^{1/2}$   
 $d$  = inside diameter pipe (in)  
 $SG$  = specific gravity

NOTES:  
 - PROVIDE STAINLESS STEEL COVER FOR ALL WALL + FLOOR CLEANOUTS  
 - SEE ARCHITECTURAL DETAILS FOR WUDU AREA  
 - ALL VALVES SHALL BE ACCESSIBLE OR LOCATED WITH STAINLESS STEEL ACCESS COVER ON WALL OR CEILING

4" SAN FROM UPPER LEVEL  
 SEE 2ND FL WASTE WATER PLAN

SEE SPECS +  
 DETAIL FOR ELEV.  
 SUMP. D.S. CHAS.  
 TO STORM  
 SYSTEM

4" SANITARY LINE CONNECT TO  
 EXISTING SANITARY LINE AT  
 THIS LOCATION. VERIFY EXACT  
 LOCATION IN FIELD

No.	Date	Revised



**Heritage Architecture, LLC**  
 Architecture Design Interiors  
 352 Evelyn St., Suite 2  
 Paramus, N.Y. 07652  
 Tel : (201) 262 3000  
 Fax : (201) 262 3000

Project No:	0919	Project:	DAR-UL ISLAM HOUSE OF WORSHIP (MOQUE)
Date:	December, 02, 2010	Drawn By:	Y.A.
Checked By:	NA	Client:	
Scale:	As Noted	Drawing Title:	1ST FLOOR WASTE WATER PLAN
Lot:	"		
Block:	"		

Sheet:  
 Nassir Ahmad-Nar, RA  
 NJ Lic. # 16036

Drawing No:  
**P-4**