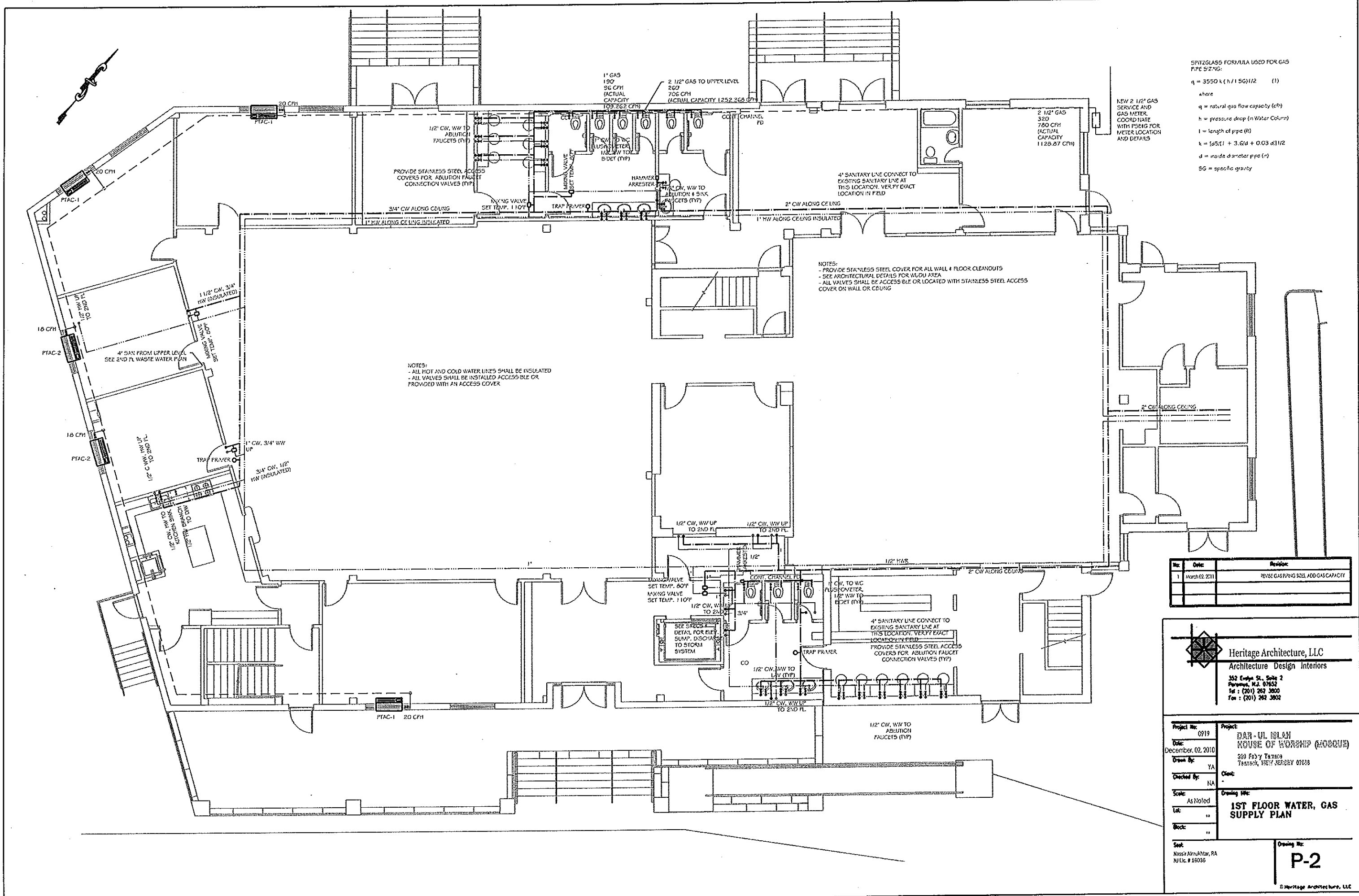


F:\Dwg\0-2009-JOBS\0919-Trk-Msq\CD\Sketch\CD-As Built\consultant\MEP\In\11211\ETRANSMIT\Z105(12-08-11).dwg, 5/22/2012 9:14:19 AM



SPITZGLASS FORMULA USED FOR GAS PIPE SIZING:
 $q = 3550 k (h/1.5G)^{1/2} \quad (1)$
 where
 q = natural gas flow capacity (cfh)
 h = pressure drop (in Water Column)
 l = length of pipe (ft)
 k = $[0.5(l + 3.6d + 0.03 a)]^{1/2}$
 d = inside diameter pipe (in)
 SG = specific gravity

NOTES:
 - PROVIDE STAINLESS STEEL COVER FOR ALL WALL & FLOOR CLEANOUTS
 - SEE ARCHITECTURAL DETAILS FOR W/DU AREA
 - ALL VALVES SHALL BE ACCESSIBLE OR LOCATED WITH STAINLESS STEEL ACCESS COVER ON WALL OR CEILING

NOTES:
 - ALL HOT AND COLD WATER LINES SHALL BE INSULATED
 - ALL VALVES SHALL BE INSTALLED ACCESSIBLE OR PROVIDED WITH AN ACCESS COVER

No.	Date	Revision
1	March 02, 2011	REVISE GAS PIPING SIZE, ADD GAS CAPACITY

Heritage Architecture, LLC
 Architecture Design Interiors
 352 E. 8th St., Suite 2
 Newark, NJ 07102
 Tel: (201) 262 3800
 Fax: (201) 262 3802

Project No:	0919	Project:	DAR-UL ISLAM HOUSE OF WORSHIP (MOSQUE)
Date:	December, 02, 2010	Drawn By:	Y.A.
Checked By:	NA	Client:	
Scale:	As Noted	Drawing No.:	1ST FLOOR WATER, GAS SUPPLY PLAN
Lot:	"		
Block:	"		

Sheet: Nassir Alkhatib, RA
 NJ Lic. # 16038
 Drawing No. **P-2**
 © Heritage Architecture, LLC